

Calgary Metropolitan Region Board
Land Use Committee Meeting Agenda

June 7, 2018, 9:00 AM

Mount Royal University, Roderick Mah Centre for Continuous Learning
Room EC2010

The purpose of this meeting is to convene, discuss and make decisions regarding recommendations to be made to the Calgary Metropolitan Region Board.

- | | |
|---|------------------|
| 1. Call to Order | Sheard |
| 2. Chair's Opening Remarks | Sheard |
| 3. Adoption of Agenda
<i>To adopt and/or revise today's agenda</i> | All |
| 4. Approval of Minutes of Last Meeting (Attachment)
<i>To review, modify and approve the May 10, 2018 Minutes</i> | All |
| 5. REF Process (Attachment)
<i>For Recommendation To approve an interim REF process for reviewing statutory plan and plan amendments</i> | All |
| 6. Progress Update on Interim Growth Plan (Attachment)
<i>To provide an update on IGP timeline and process</i> | Tipman & ISL/USI |
| 7. To Provide a Verbal Progress Update on Growth Plan | Tipman |
| 8. Presentation on Regional Planning Best Practices (Attachment)
(11:00-12:00) | ISL/USI |
| 9. Next Meeting: Thursday, July 5, 2018 | |
| 10. Adjournment | Sheard |

Land Use Committee Members:

Mayor Peter Brown
 Councillor Gian-Carlo Carra
 Mayor Marshall Chalmers
 Mayor Jeff Genung
 Reeve Larry Spilak

Mayor Craig Snodgrass
 Mayor Bill Robertson
 Reeve Greg Boehlke
 Councillor Tom Ikert

Christopher Sheard, Committee Chair
 Dale Beesley, GOA Representative

Upcoming Meetings:

Land Use Committee	Thursday July 5th 9:00 AM	Mount Royal University Room EC2010
Board Meetings	Friday June 22 nd - 9:00 AM	Mount Royal University Room EC2010

Minutes of the meeting of
the Land Use Committee of
the Calgary Metropolitan Region Board
held at Mount Royal University
on Thursday May 10, 2018

Delegates in Attendance:

Mayor Peter Brown – City of Airdrie
Councillor Gian-Carlo Carra – City of Calgary
Mayor Marshall Chalmers – City of Chestermere
Mayor Jeff Genung – Town of Cochrane
Reeve Larry Spilak – MD of Foothills
Mayor Craig Snodgrass – Town of High River
Mayor Bill Robertson – Town of Okotoks
Reeve Greg Boehlke – Rocky View County
Councillor Tom Ikert – Wheatland County

Dale Beesley – ADM Municipal Affairs

CMRB Administration:

Christopher Sheard, Chair
Jordon Copping, Chief Officer
Liisa Tipman, Project Manager–Land Use
Jaime Graves, Project Manager-Intermunicipal Servicing
Shelley Armeneau, Office Manager

1. Call to Order

Called to order at 9:00 AM.

2. **Chair's Opening Remarks**

Chair Sheard opened the meeting and welcomed members and staff.

3. Approval of Agenda

Moved by Mayor Brown, Seconded by Mayor Robertson, accepted by Chair.

Motion: That the Calgary Metropolitan Region Land Use Committee approve the agenda of this meeting.

Motion carried unanimously.

4. Review and Approve Minutes

Moved by Councillor Genung, Seconded by Mayor Brown, accepted by Chair.

Motion: That the Calgary Metropolitan Region Land Use Committee approve the Minutes of the April 6 2018 meeting as presented.

Motion carried unanimously.

In reviewing the Minutes from the April 6 meeting, Councillor Carra commented on a discussion from the April 20 Board meeting and the addition of policies regarding flood prone areas in the Terms of Reference. A more fulsome discussion was requested around watershed management.

Action Item: Direct CMRB administration to come forward with a **recommendation about where in our mandate and work plan “watershed management” best fits and to have a broader discussion.** Technical experts from individual member municipalities will be consulted for content of subject matter.

Dale Beesley arrived at 9:12 AM.

5. Land Use Plan and Servicing Plan Topic Grouping

Liisa Tipman reviewed the chart included in the agenda package and discussed how the requirements of the Regulation for growth and servicing plans may be grouped and noted where they are linked.

Committee member discussion included:

- o Item 4 Growth Areas: Investigate ways to describe areas **“where people live and where people work”**.
- o item 9 Agricultural lands: To what extent are agricultural lands required to be included in the Land Use Plan?
- o Suggested speakers to attend an upcoming committee meeting:
 - o Steve Mouzon, the Sky Method
 - o Peter Calthorpe – Regional Planning
 - o Jennifer Keesmaat - 400 years in the making

6. Population and Employment Projections

Moved by Mayor Brown, Seconded by Mayor Robertson. Amended by Reeve Boehlke to add “or the most currently available census data” to **item #2, bullet 2**, accepted by Chair.

Motion: That the Calgary Metropolitan Region Land Use Committee authorize administration to:

1. Update the CRP population and employment projections including:
 - Updating population projections by region and by municipality.
 - Updating employment projections by region.
- Engage a consultant to complete these tasks.

2. As identified by TAG, the CRP population and employment projections should be updated to:
 - Reflect the boundaries of the Calgary Metropolitan Region Board,
 - Incorporate the 2016 census information, or the most currently available census data
 - Reflect current economic conditions in the Region as their associated effect on population and employment growth,
 - Other as determined during future collaborations with TAG and LUC.
3. To adopt an approach to employment projections which identifies concentrated areas of employment rather than undertaking municipal-wide employment. This approach is intended to better link Growth Plan and Servicing Plan considerations and to focus on building success for these areas. The details of how to best approach this type of analysis will be the subject of future discussions with TAG and LUC.

Motion carried unanimously.

Request by member for flexibility to undertake alternative methods/strategies related to population and employment projections in the future if/as needed.

7. Interim REF Administrative Principles

Moved by Reeve Boehlke, Seconded by Mayor Robertson, accepted by Chair.

Motion: That the Calgary Metropolitan Region Land Use Committee approve the REF Principles and Objectives as presented, and recommend they be adopted by the Board.

Motion carried unanimously.

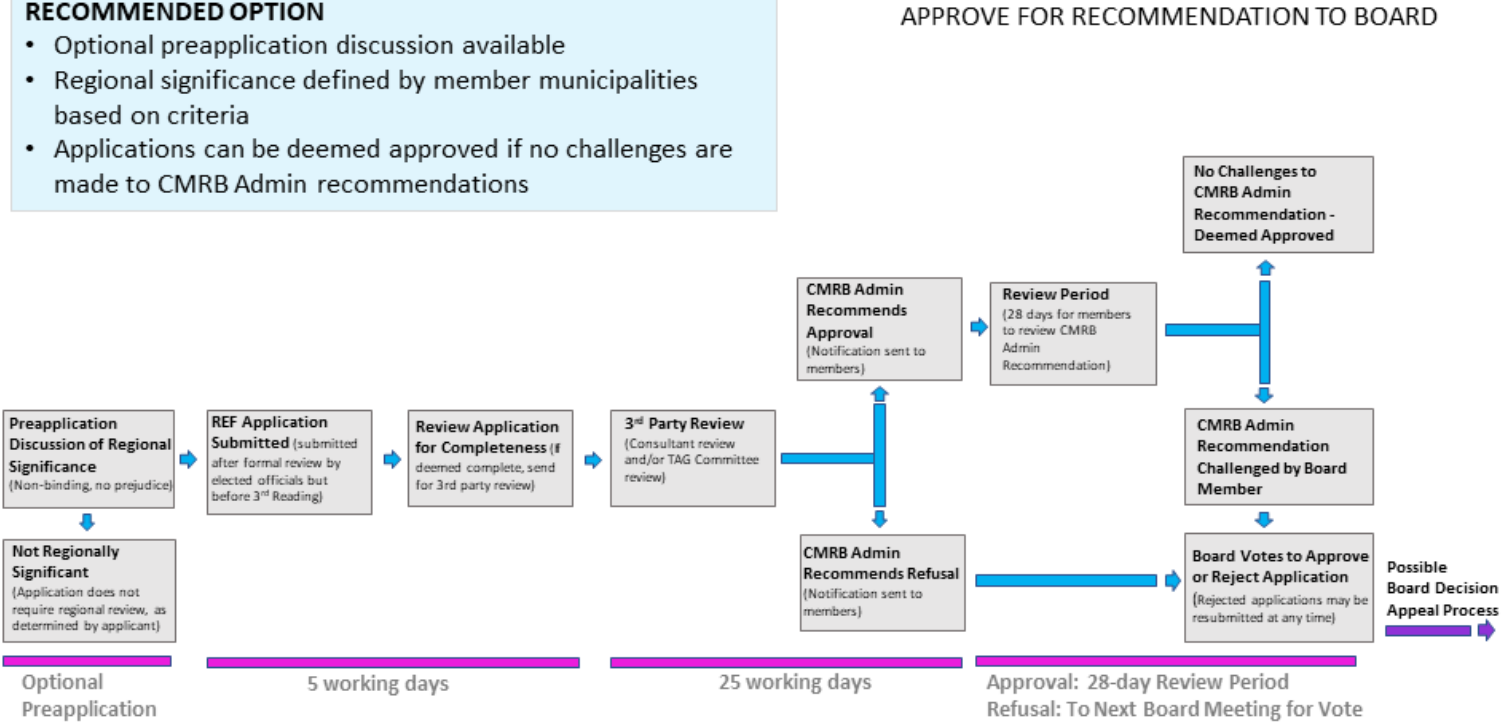
8. In-camera session began at 11:22 AM. In-camera session ended at 12:00 PM.
9. Adjourned at 12:05

CMRB Chair, Christopher Sheard

Agenda Item	5
Submitted to	Land Use Committee
Purpose	Approve For Recommendation to the Board
Subject	Interim Regional Evaluation Framework (Interim REF) Application Review Process
Meeting Date	June 7, 2018
For Decision	
That the Land Use Committee APPROVE FOR RECOMMENDATION TO THE BOARD an Interim Regional Evaluation Framework (Interim REF) Application Review Process	
<p>Background</p> <ul style="list-style-type: none"> • On March 23, 2018 and April 27, 2018 CMRB Administration held workshops with the Technical Advisory Group (TAG). • The purpose of the workshops was to develop the INTERIM PROCESS by which statutory plans and plan amendments will be submitted to the CMRB for technical review and Board approval. • Four (4) DRAFT Interim REF processes were developed as a result of workshop discussions. • Preferred Interim REF options were presented to the Land Use Committee on May 10, 2018 for discussion. The recommended Interim REF review process is consistent with the direction of the Land Use Committee. • CMRB Administration and TAG reviewed Land Use Committee input on May 11, 2018. • CMRB Administration seeks a recommendation from the Land Use Committee on the proposed Interim REF Application Review process. 	

1. Interim REF Application Review Process for Recommendation to Board

- RECOMMENDED OPTION**
- Optional preapplication discussion available
 - Regional significance defined by member municipalities based on criteria
 - Applications can be deemed approved if no challenges are made to CMRB Admin recommendations



Land Use Committee – June 7, 2018

Background to the Proposed Interim REF Review Process

2. What is Interim REF?

Once in place, the Interim Regional Evaluation Framework (Interim REF) will provide the Calgary Metropolitan Region Board with the means to evaluate regionally significant statutory plans and statutory plan amendments. The primary goal of Interim REF is to ensure local statutory plans are consistent with long-term regional goals and interests **as defined by the member municipalities**.

The Interim REF includes three (3) aspects: the criteria which will determine which plans are regionally significant, the **process** through which the CMRB will review and approve statutory plans and statutory plan amendments and the objective and clear **criteria** against which the CMRB will judge plans.

- Regional goals and interests will be expressed through Growth Plan or Interim Growth Plan and the Servicing Plan.
- An additional set of criteria will be developed to determine which statutory and statutory plan amendments are regionally significant.

CMRB Administration and TAG are currently working together on options for the Interim REF PROCESS. This process needs to be in place to facilitate the review and approval of regionally significant statutory plans. The criteria for reviewing regional plans and for determining regional significance will be the subject of future TAG and LUC workshops. These criteria are being informed through the Interim Growth Plan planning process.

3. REF Requirements of the CMRB Regulation

The requirements of REF are outlined in Section 12(1-6) of the Calgary Metropolitan Region Board Regulation.

Section 12(1) is presented in its entirety below:

12(1) The Board shall prepare and submit to the Minister a Regional Evaluation Framework containing

- (a) criteria to be used to determine whether a statutory plan must be submitted for approval under section 13(1),
- (b) procedures for submitting statutory plans for approval under section 13(1), and

(c) the criteria and procedures to be followed by the Board for the objective evaluation and approval of statutory plans in relation to the Growth Plan and the Servicing Plan.

(2) The Minister may, by order, approve, reject or amend a Framework.

(3) The Framework has no effect until it is approved by the Minister.

(4) If the Board fails to provide a Framework, the Minister may, by order, establish a Framework.

(5) Subject to subsections (3) and (4), if the Minister establishes or approves a Framework, the Minister shall provide a copy of it to each participating municipality.

(6) The Framework is not a regulation within the meaning of the *Regulations Act*.

3.1. Summary of TAG Workshops

3.1.1. Workshop #1 (March 23, 2018)

A workshop was held with TAG on March 23, 2018. Two (2) key workshop questions were discussed:

1. What are the objectives of the Interim REF? How should we define success?
2. How should we answer the “who, what, when, where and why” of the Interim REF process?

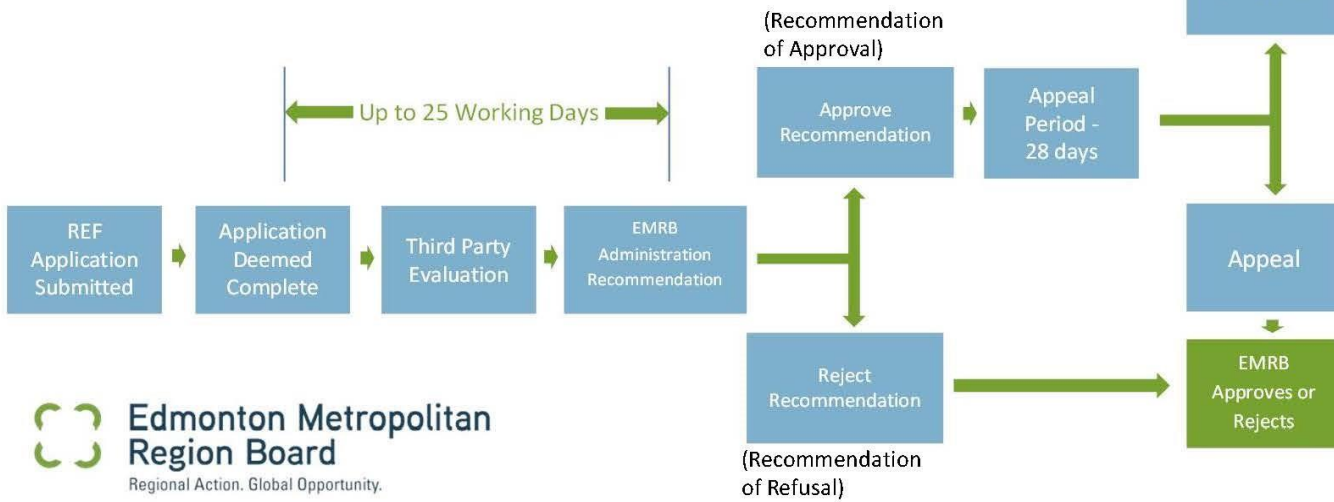
A range of existing regional decision-making processes were reviewed from Ontario, British Columbia and Edmonton. During the workshop, TAG agreed that the current Edmonton Metropolitan Region Board (EMRB) REF process was a preferred starting point for the Interim CMRB REF process.

The benefits of the EMRB REF process compared to other processes reviewed from across Canada were:

1. It's expediency.
2. It's simplicity.
3. The prominent role of technical experts in making recommendations to the Board.

EXAMPLE #1 - Current EMRB REF Process

- Clear and proven process
- Expedient
- Technical experts review plans and make recommendations directly to the Board
- Individual municipalities determine which Statutory Plans and Plan Amendments should be submitted for regional review based on clear, objective referral criteria
- Member municipalities **submit ONLY regionally significant plans** to EMRB Administration for review



Source: EMRB Website (<http://emrb.ca/regional-evaluation-framework/>)

Figure 1 – Edmonton Metropolitan Region Board REF Process



TAG suggested potential options/changes to the EMRB REF process including:

- a preapplication option,
- a discussion about when regional significance is determined and ways to provide “off-ramps” for certain kinds of statutory plans or plan amendments that are not regionally significant,
- an option for TAG application review of applications in addition to a 3rd party consultant review.

3.1.2. Workshop #2 (April 27, 2018)

A second workshop was held with TAG on April 27, 2018. Using the input provided by TAG at Workshop #1, CMRB Administration presented a number of DRAFT REF process options for discussion. TAG reviewed each of the DRAFT Interim REF options against the DRAFT Objectives and Criteria. TAG discussed changes, refinements and other options. The outcomes of the REF process are the subject of discussion at the Land Use Committee.

The outcomes of the workshop, including two (2) different options for each part of the Interim REF application review process options, are included below.

- Option 1A and 1B show two different ways regional significance can be determined. **In Option 1A, regional significance is determined by individual municipalities** using an agreed-upon set of criteria. **In Option 1B, regional significance is determined by CMRB Administration** using an agreed-upon set of criteria.
- Option 2A and 2B show two different processes for approving or refusing applications. **In Option 2A, the Board votes on all applications. In Option 2B, applications are deemed approved after a review period** unless the recommendation of approval by CMRB Administration is challenged by a Board member. All applications recommended for refusal by CMRB Administration go directly to a vote of the Board.

CMRB Administration prefers the following options:

- Option 1A – that each individual municipality determines regional significance using set criteria prior to submitting a REF application (Option 1A).
- Option 2B – that applications are deemed approved by the Board after an application review period.

Figure 2 – DRAFT Interim REF Process Option 1A

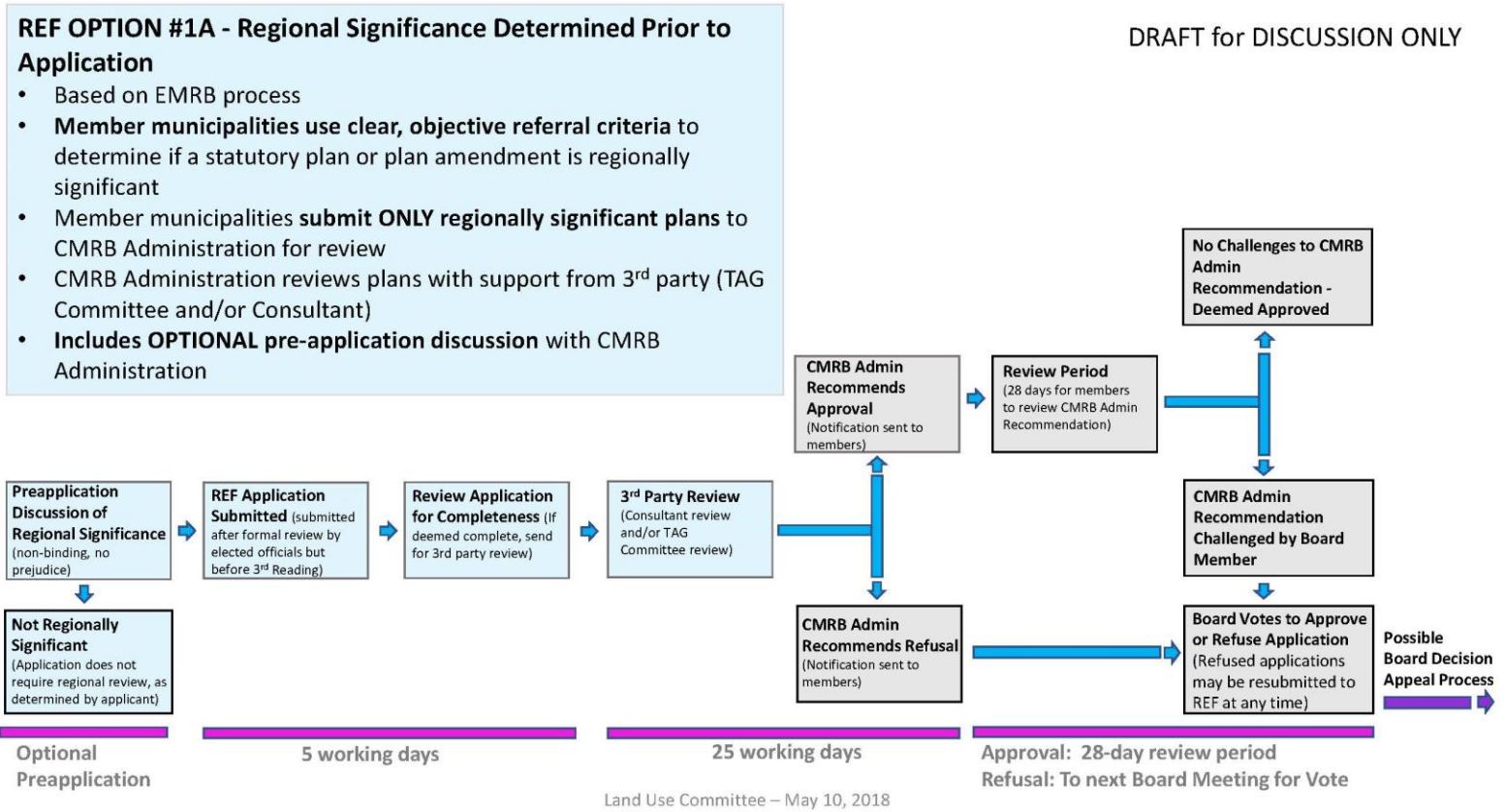
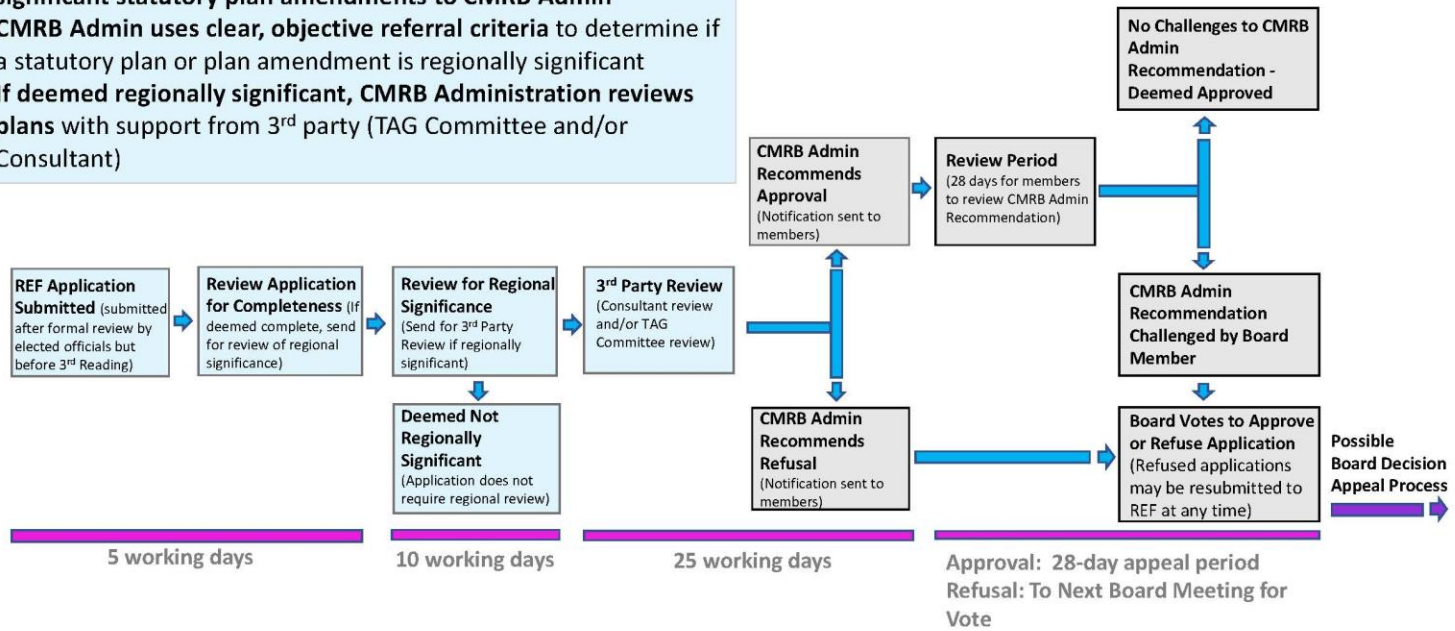


Figure 3 – Interim REF Process Option 1B

REF OPTION #1B - Regional Significance Determined as Part of the Application Review Process

- Based on EMRB process
- **Member municipalities submit ALL statutory plans and significant statutory plan amendments to CMRB Admin**
- **CMRB Admin uses clear, objective referral criteria to determine if a statutory plan or plan amendment is regionally significant**
- **If deemed regionally significant, CMRB Administration reviews plans with support from 3rd party (TAG Committee and/or Consultant)**

DRAFT for DISCUSSION ONLY



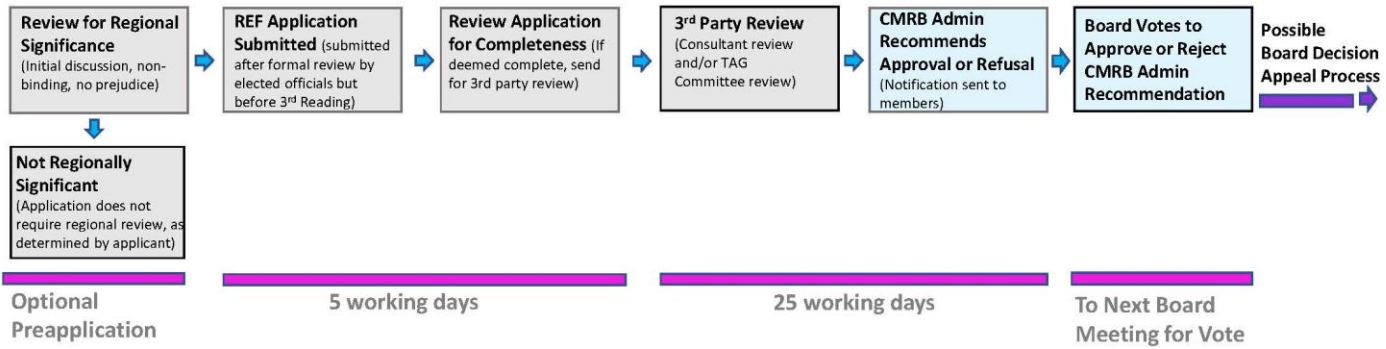
Land Use Committee - May 10, 2018

Figure 4 - Interim REF Option 2A

DRAFT for DISCUSSION ONLY

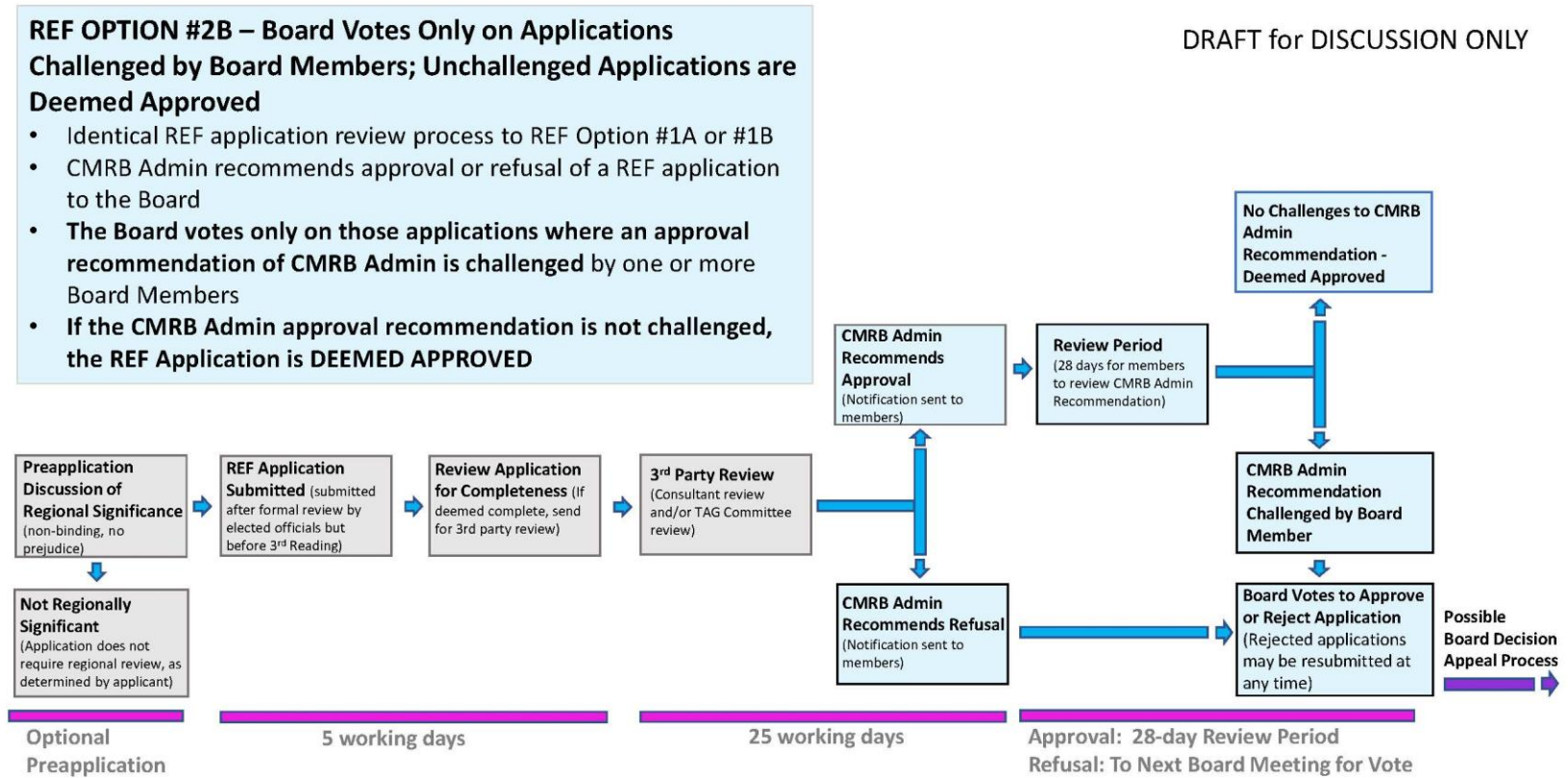
REF OPTION #2A - Board Votes on All Applications

- Identical REF application review process to REF Option #1A or #1B
- CMRB Admin recommends approval or refusal of a REF application to the Board
- **The Board votes to approve or refuse all REF applications**



Land Use Committee - May 10, 2018

Figure 5 - Interim REF Option 2B



3.1.3. Land Use Committee Discussion on May 10, 2018

At the May 10, 2018 Land Use Committee meeting, the LUC reviewed and discussed the DRAFT Interim REF application review process options. LUC discussions were generally focused on enforcement of the Interim Growth Plan and the role of trust in the application review process.

Consensus of the Committee indicated that Option #1A and Option #2B were the preferred options for the Interim REF process.

3.1.4. Meeting with TAG on May 11, 2018

CMRB Administration and TAG reviewed the preferred option of the LUC and discussed the details of the review process timelines.

Consensus of the TAG indicated that Option #1A and Option #2B were the preferred options for the interim REF process.

Agenda Item	6
Submitted to	Land Use Committee
Purpose	Receive For Information
Subject	Interim Growth Plan (IGP) Status Update
Meeting Date	June 7, 2018
For Information	
That the Land Use Committee RECEIVE FOR INFORMATION an update on the status of the Interim Growth Plan (IGP)	
<p>Background</p> <ul style="list-style-type: none"> • Development of the Interim Growth Plan (IGP) is in progress. The purpose of the IGP is to provide criteria to support the Interim Regional Evaluation Framework. The criteria will be the basis against which statutory plans and plan amendments will be judged on an interim basis. • ISL Engineering and Land Services and Urban Strategies Inc are the consultants leading the development of the IGP with CMRB Administration. • The consultants and CMRB Administration are working closely with the Technical Advisory Group (TAG) to define the regionally significant considerations that should form the Interim REF criteria. • CMRB Administration requests the Land Use Committee receive this update on the status of the IGP for information. 	
<p>Attachments</p> <ul style="list-style-type: none"> • "Interim Growth Plan Status Update", ISL Engineering and Land Services and Urban Strategies Inc. 	

Calgary Metropolitan Region Interim Growth Plan Update

LUC Meeting
June 7, 2018



01

Interim Growth Plan Overview & Update

Meeting Schedule Update & Key Milestones

**Existing CMP
Plan Evaluation
& Draft
Contextual
Assessment**

**TAG
June 1**

**IGP Initial
Framework &
Final Contextual
Assessment**

**CAOs & TAG
June 22**

**LUC
July 5**

**Draft IGP
Principles &
Policies
& Mapping**

**CAOs & TAG
July 27**

Draft IGP Plan

**CAOs & TAG
August 17**

Final IGP Plan

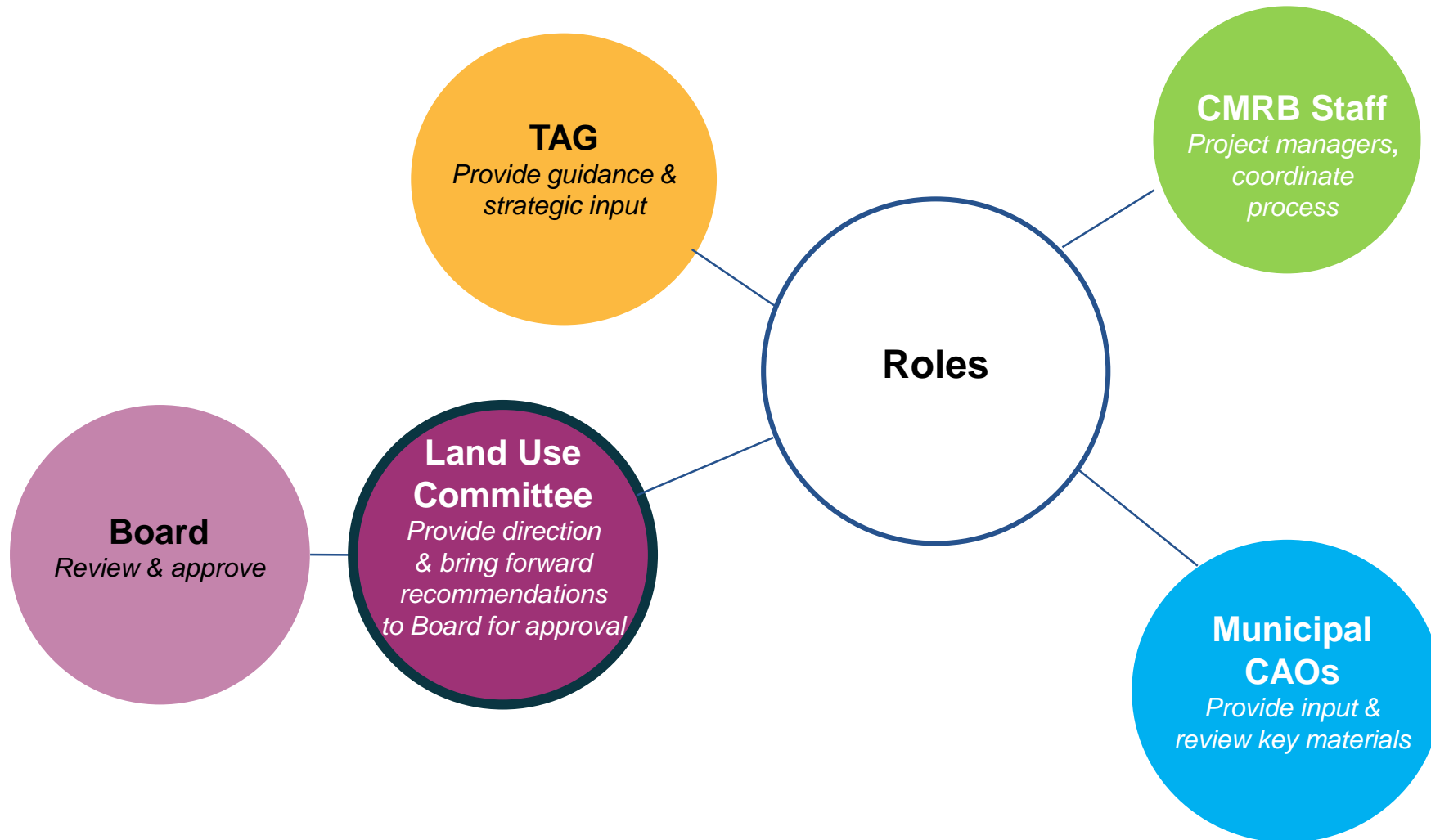
**LUC September 6
TAG September 7**

Board September 21



TODAY
LUC Meeting
Update June 7

A Collaborative Effort



Approach to the CMP Review & IGP Development

PLAN REVIEW & EVALUATION

Regulatory Requirements
(Objectives & Content of the Plan)

Existing CMP Review & Evaluation

CAO, TAG & LUC Input

Regional Context Assessment

Best Practices Review
(Policy Topics & Tools / Innovative Practices for Consideration)

INTERIM GROWTH PLAN

Identify Policy Topics & Initial Policy Directions for Consideration in the IGP

FULSOME GROWTH PLAN

What will be addressed in the fulsome Growth Plan?

Approach to the CMP Review & IGP Development Process



- **Review and evaluate the CMP's principles, strategies and policies** and tools in relation to the Regulation - Section 8 (Objectives of the Growth Plan) and Section 9 (Contents of the Growth Plan).
- Consider if the **CMP provides sufficient detail, direction and tools** to review and approve new municipal statutory plans during development of the Growth Plan, and identify areas that should be addressed in the IGP.
- Consider **potential IGP criteria and initial recommendations** in for the Interim REF.
- Identify **gaps and make recommendations** on issues for consideration in the fulsome Growth Plan.

Key Questions for CMP Review



Regulatory Requirements

- Does the existing CMP address the Regulation (Objectives & Contents of the Plan)?
- What can be addressed in the IGP on an interim basis?

Complete & Comprehensive

- Does the existing CMP address topics and relevant policy areas related to regional growth management; linked to the growth challenges and opportunities in the region?
- What policy areas and tools should be addressed in the Interim Growth Plan and full Growth Plan?

Clear & Effective

- Does the existing CMP provide clear policy direction and provide sufficient detail and direction to review and evaluate statutory plans on an interim basis?
- What needs to be revised/added?

Implementable & Achievable

- Does the existing CMP have effective implementation mechanisms and triggers indicating when municipal statutory plans should be subject to regional review?
- What can be achieved in the IGP to implement the policy directions?
- What implementation recommendations/mechanisms should be considered for the Growth Plan?

02

CAO Interviews: What We Heard

CAO Consultation

- Invited interviews with all CAOs from 10 member municipalities
- Open-ended, informal individual discussions
- The interview focused on the following questions and core topics:
 - What are the main regional issues facing the Calgary Metropolitan Region over the next 30 years?
 - What does success look like for the IGP? What are your expectations for the IGP?
 - What do you anticipate are the biggest hurdles or obstacles in the IGP development process, and what are ways to address/overcome them?
 - What are the primary development issues in your municipality?
 - Is there any additional information you would like to share with the CMRB and Consulting Team to inform the IGP development phase?



Key Regional Issues for the Growth Plan

CAO Input

- **Water** - Water is a primary regional issue that requires an innovative regional approach
- **Growth Planning Policy Topics & Tools** - Provide direction on residential and non-residential growth, and the provision of hard and soft infrastructure
- **Diverse Communities** - Reflect the diversity of communities in the CMR and urban and rural issues
- **True Cost of Growth, Triple Bottom Line & Sustainability** - Consider the 'true cost of growth' and take a triple bottom line approach



IGP Success Factors

CAO Input

- Be simple, straight-forward and principles-based with measurable goals and common definitions
- Look beyond municipal boundaries and establish a common regional perspective and shared definitions
- Be compatible with existing MDPs and approved statutory plans
- Define what kind of Plan amendments require REF evaluation
- Allow development and investment to continue in region on interim basis
- Provide a common voice and identify regional priorities for work with Province



Key Regional Issues for the IGP

CAO Input

- **Relationship between development, density and infrastructure**
 - Proximity, scale and impact of residential and non-residential development
 - Impacts on major infrastructure (roadways, airports, rail, transit corridors) and water servicing and community services/soft infrastructure
 - Residential growth
 - Non-residential growth and economic development – continued investment in the region
- **Environmental considerations**
 - Environmentally significant areas and watersheds
 - Source water protection and protection of river systems
- **Consideration for community services**

Discussion

Are there any other regional issues to consider in the IGP?

Agenda Item	8
Submitted to	Land Use Committee
Purpose	Receive For Information
Subject	Regional Planning Best Practices Presentation
Meeting Date	June 7, 2018
<p>For Information</p> <p>That the Land Use Committee RECEIVE FOR INFORMATION a presentation about regional planning best practices</p>	
<p>Background</p> <ul style="list-style-type: none"> • Development of the Interim Growth Plan (IGP) is in progress. The purpose of the IGP is to provide criteria to support the Interim Regional Evaluation Framework. The criteria will be the basis against which statutory plans and plan amendments will be judged on an interim basis. • As part of the IGP process, ISL Engineering and Land Services and Urban Strategies Inc undertook a review of regional planning best practices • A presentation summarizing ISL and USI’s review of regional planning best practices was presented to the Technical Advisory Group (TAG) on June 11, 2018 • CMRB Administration requests the Land Use Committee receive this presentation on regional planning best practices for information 	
<p>Attachments</p> <ul style="list-style-type: none"> • “Regional Planning Best Practices Review Presentation”, ISL Engineering and Land Services and Urban Strategies Inc. 	

Calgary Metropolitan Region Regional Planning: Best Practices

LUC Meeting
June 7, 2018



Calgary Metropolitan
Region Board

CMRB Land Use Committee Agenda Package Page 7 of 43



Engineering
and Land Services

URBAN
STRATEGIES
INC
Agenda Item #8

Regional Planning

Why plan as a region?

The Calgary Metropolitan Region in 2046

Where will people live?

Where will people work?

How will people move around?

How to attract economic opportunity/jobs?

**How to sustain the quality of life, services
and regional offering?**

**2,352,900
Residents**

by 2046



Why do we need a regional growth plan?

The benefits and impacts of growth **don't stop at municipal boundaries.**

Why do we need a regional growth plan?

21st century **challenges**
require **collaborative cross-**
jurisdictional approaches.

Alberta floods costliest natural disaster in Canadian history

Insurance Bureau of Canada report says staggering \$1.7B cost is still rising

The Canadian Press · Posted: Sep 23, 2013 8:38 AM MT | Last Updated: September 23, 2013



The Insurance Bureau of Canada says the latest estimate of the insured property damage from the June flood now exceeds \$1.7 billion. (Jonathan Hayward/Canadian Press)

Alberta facing water shortages, depleted reservoirs as dry summer drags on

BILL KAUFMANN

[More from Bill Kaufmann](#)

Published on: August 13, 2017 | Last Updated: August 14, 2017 6:28 AM MDT



What does a regional growth plan do?

A regional plan identifies **regional investment priorities** to foster and support growth.

What does a regional growth plan do?

A regional plan leverages opportunities for **cost efficiencies** and **service delivery.**

Elements of Regional Growth Planning



Where and how to grow?



How to coordinate and leverage investment and economic growth?



How to sustain resources for future generations?



How to plan for risk and uncertainty?

Learning from Elsewhere

Regional Best Practices

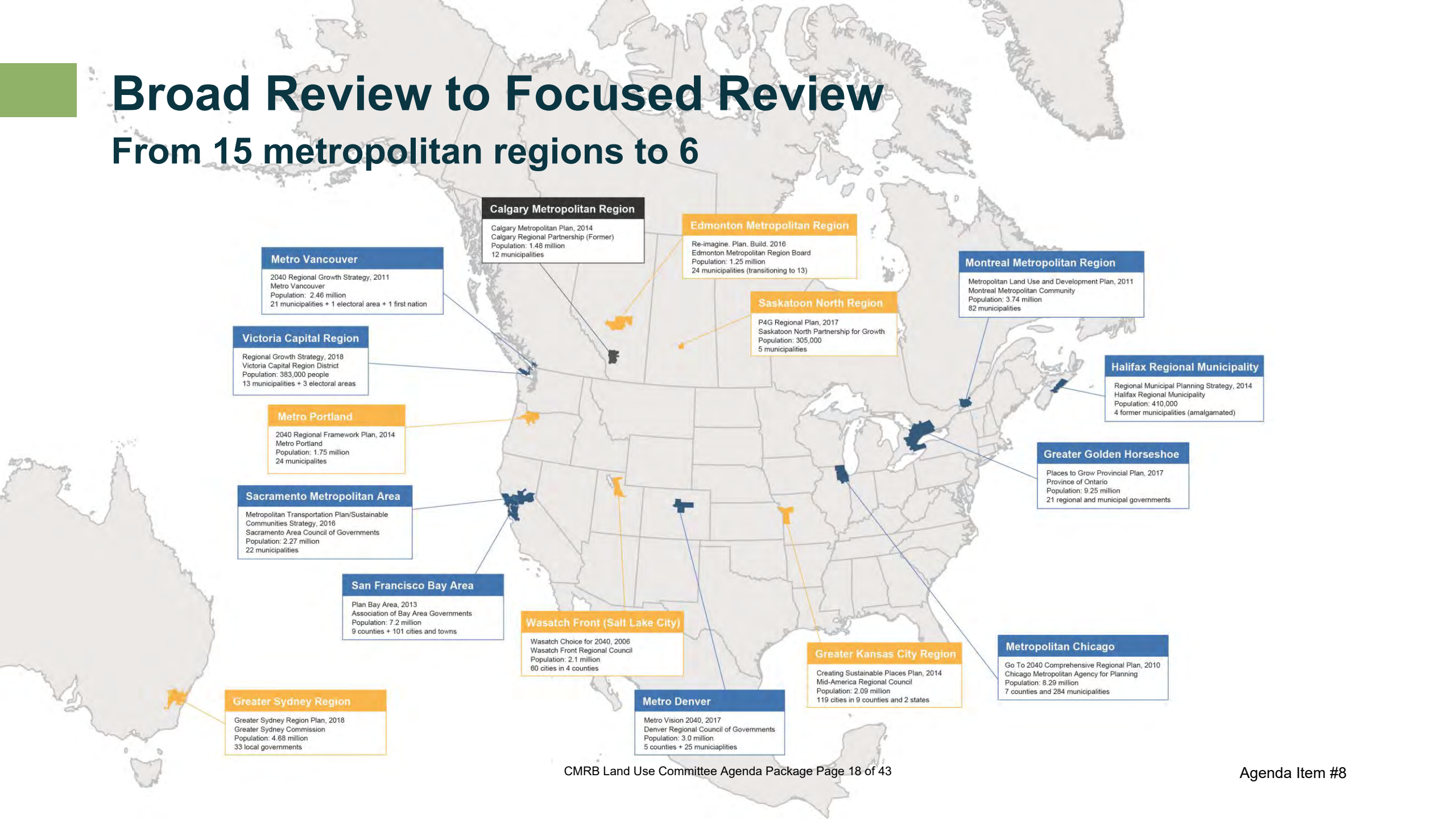
Learning from Regional Planning Best Practices

Varied experiences with regional growth planning

- **Regional growth plans can focus on land use regulations, development patterns and the environment** (Metro Portland, Greater Toronto, Metro Vancouver)
- Others have a more **economic and social** focus and emphasis on **promoting global competitiveness** (Metro Chicago)
- Other focus on **targeted investment and infrastructure funding** to support growth (San Francisco Bay Area)
- Varied implementation approaches. Some regional plans **require conformity** through land use regulations, others are **voluntary and provide incentives** to encourage implementation.

Broad Review to Focused Review

From 15 metropolitan regions to 6



A Range of Places and Scales

Year of Plan and Forecasted Population

2018

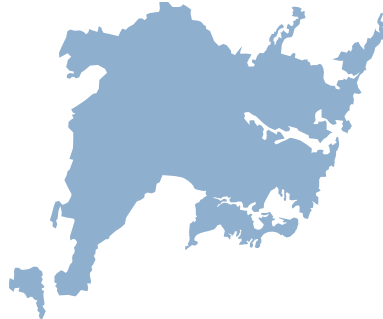
Calgary Metropolitan Region



2.35 Million by 2046

2018

Sydney



6.42M by 2036

2017

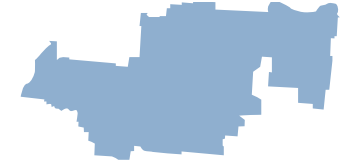
Saskatoon



500K by 2035

2016

Edmonton



2.23M by 2044

2014

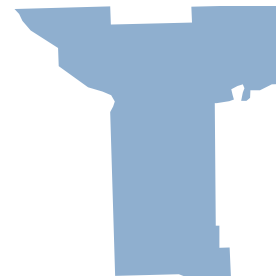
Portland



2.36M by 2040

2014

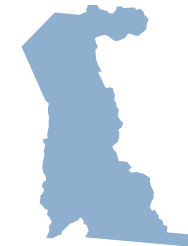
Kansas City



2.50M by 2040

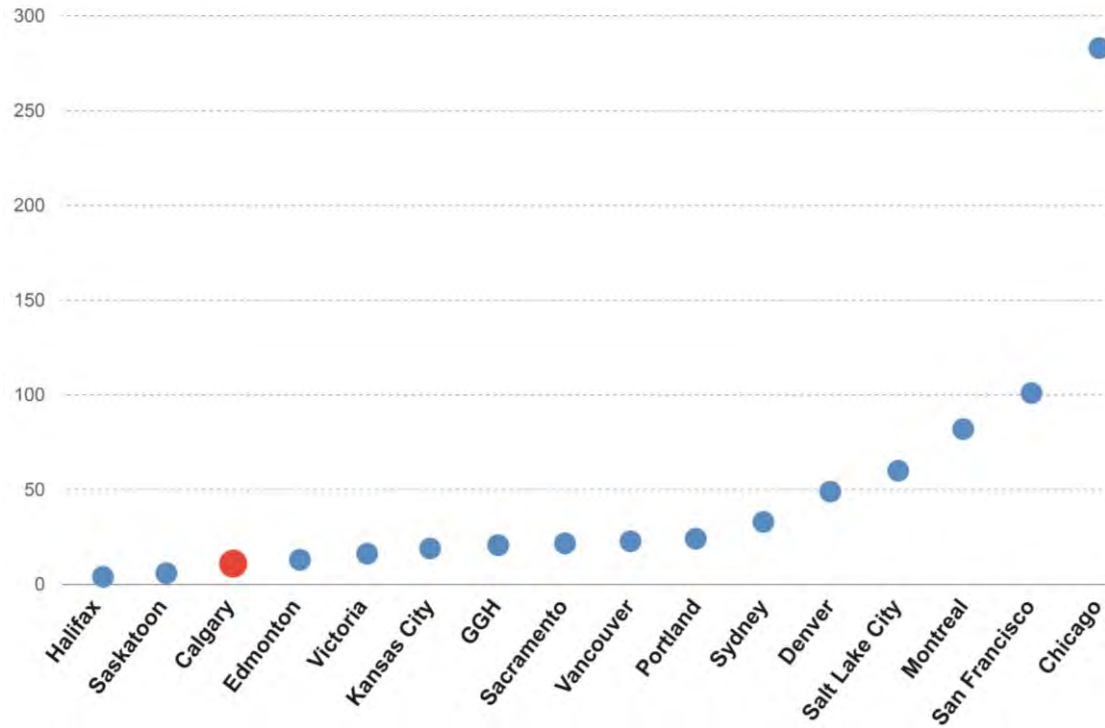
2006

Salt Lake City

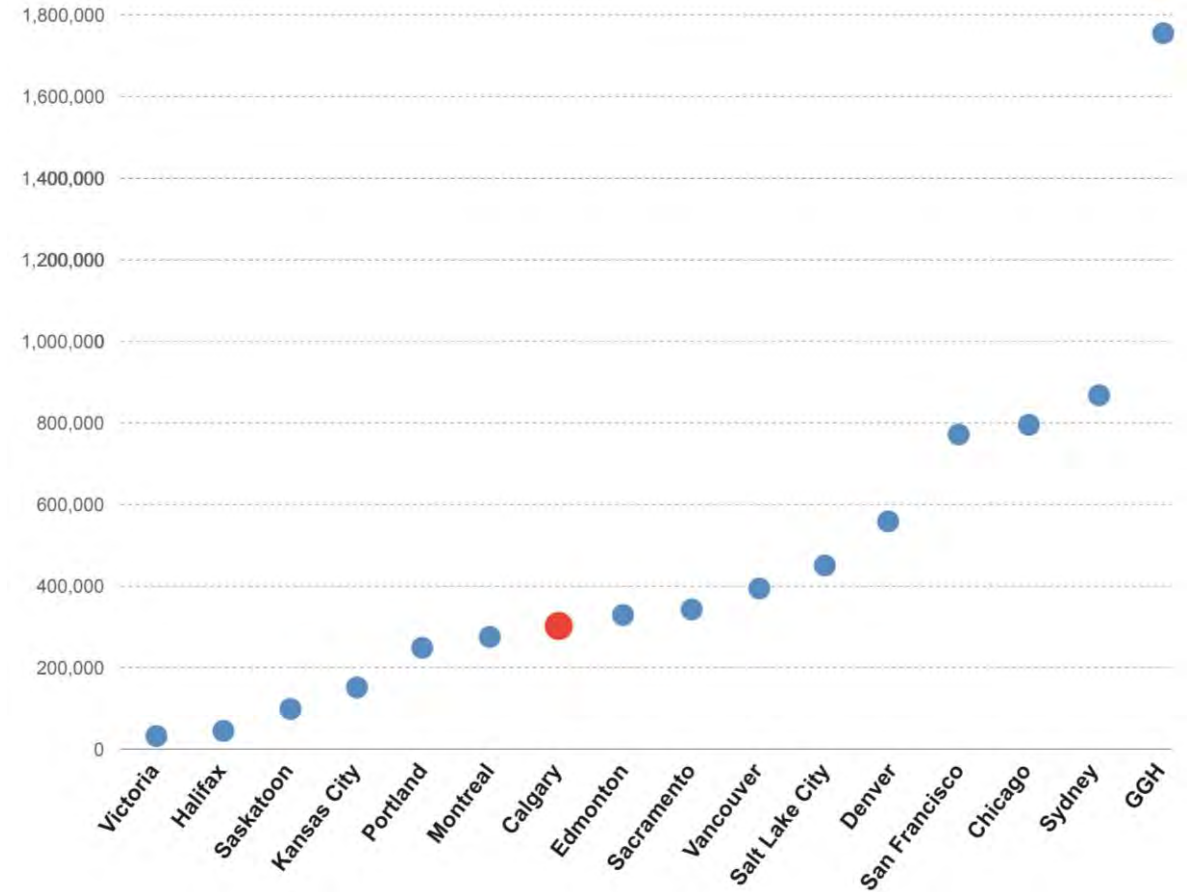


3.50M by 2040

A Range of Scales



Member Municipalities



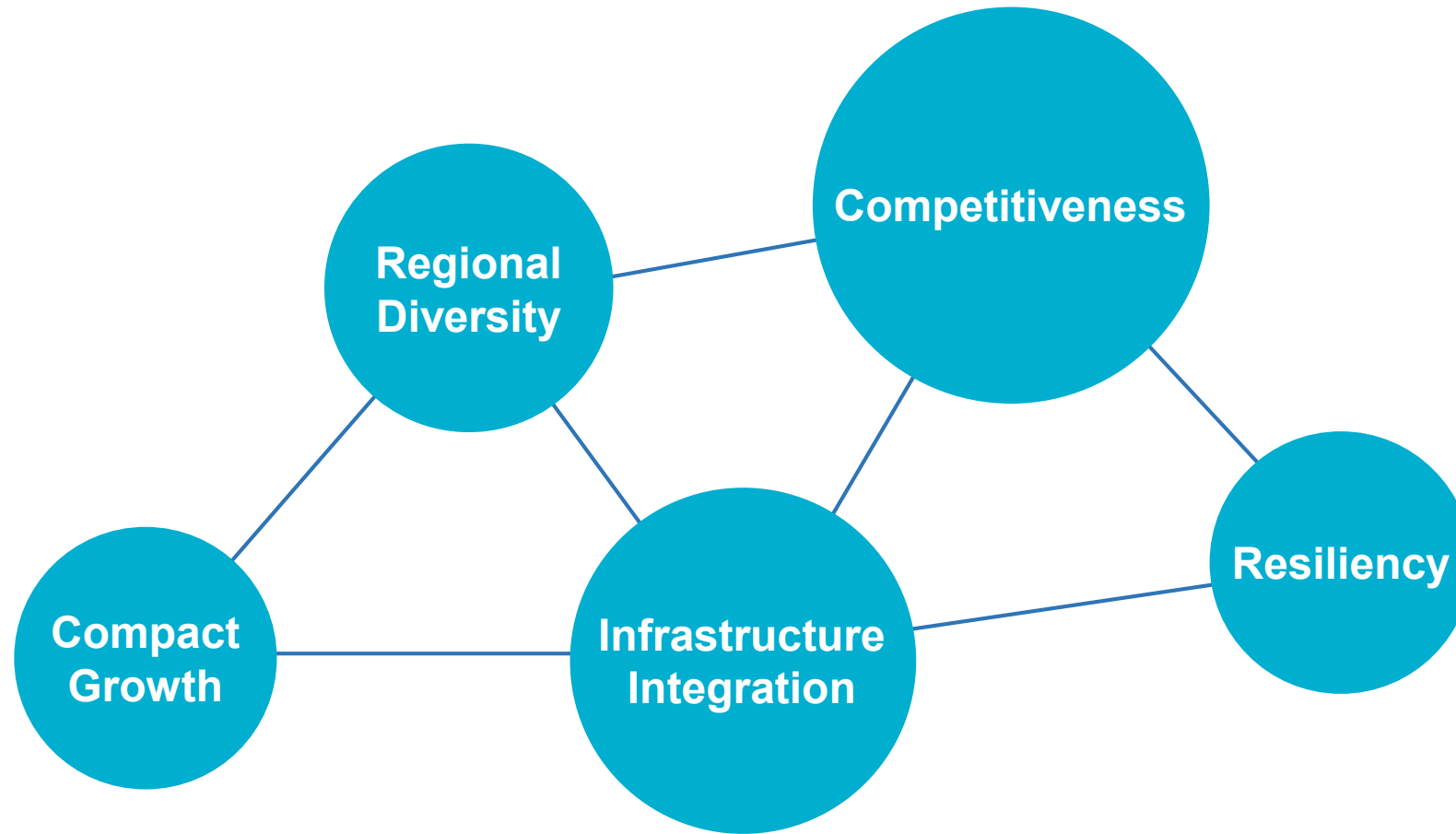
New Residents Per Decade (Forecasted)

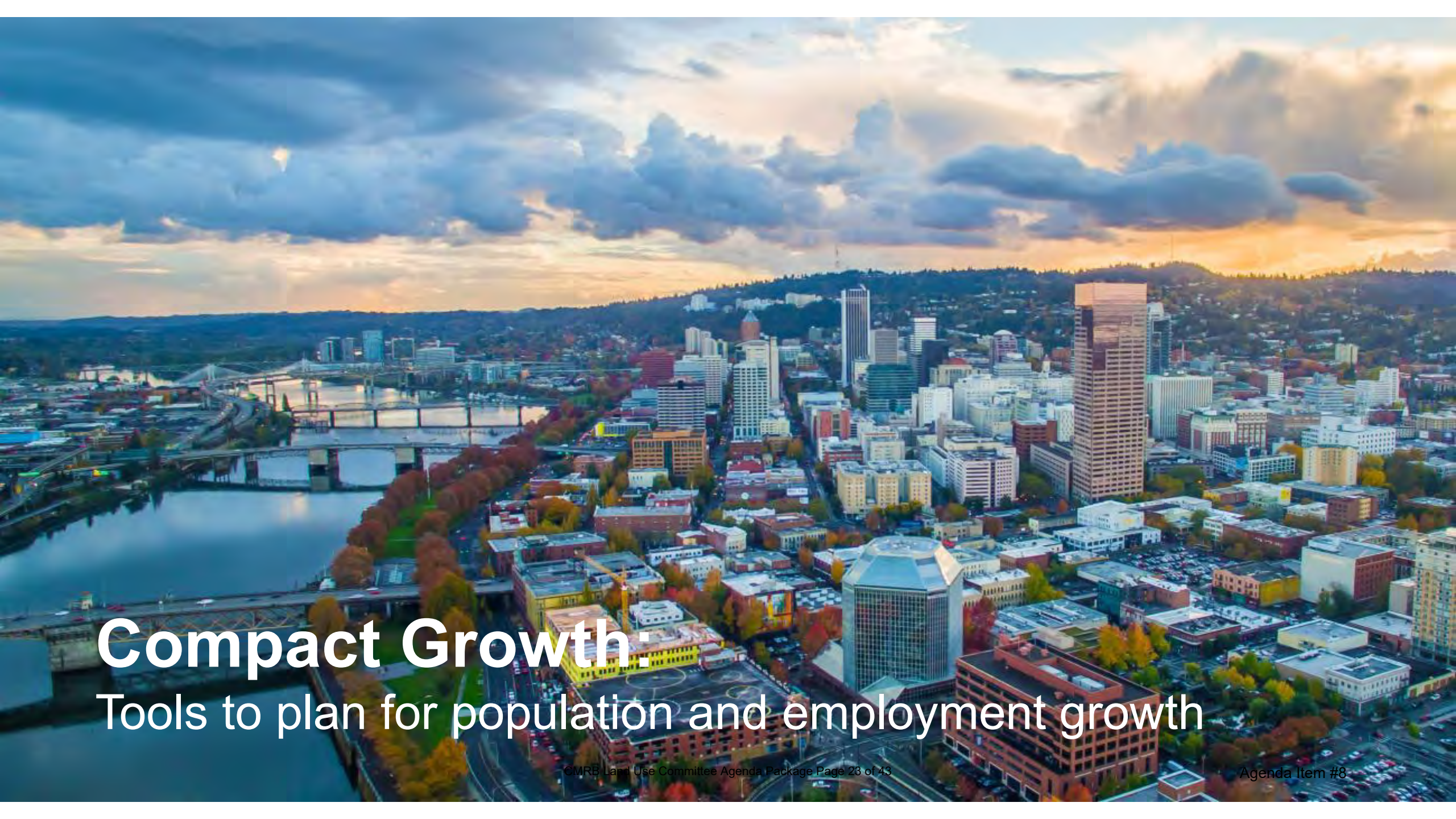
Policy Areas Addressed in Growth Plans

Policy areas most frequently included in regional growth plans:

- Settlement Patterns (Spatial Structure + Location of Growth)
- Land Use + Infrastructure Integration
- Transportation + Mobility
- Livability + Complete Communities
- Social Equity + Affordability/Choice
- Sustainability + Resilience (Environment, Energy, Climate Change Adaptation)
- Risks, Hazards + Vulnerabilities
- Agriculture
- Natural Resources and Natural Areas Protection
- Economic Vitality
- Financing, Investment + Governance
- Implementation + Monitoring

5 Key Opportunities for Regional Collaboration





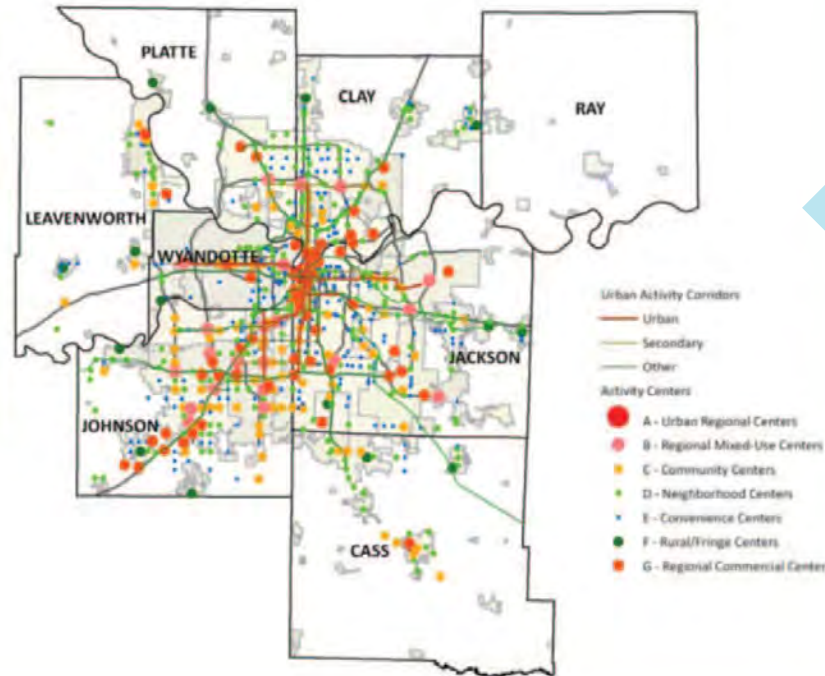
Compact Growth:

Tools to plan for population and employment growth

Identifying existing and emerging centres and corridors to accommodate new growth

Denver, Sydney, Wasatch Front (Salt Lake City), Kansas City, Portland, Sacramento, Vancouver, Victoria

Current and Potential Activity Centers and Corridors



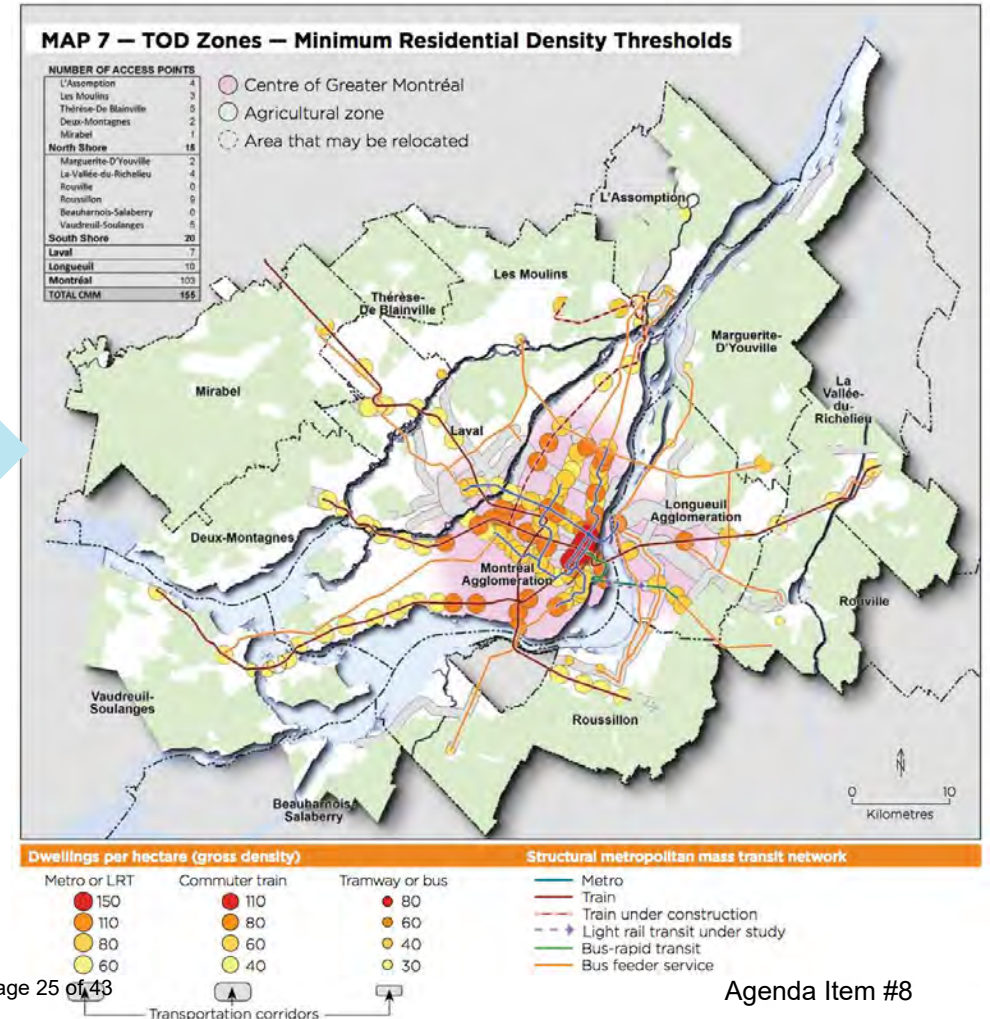
At the heart of the plan to achieve the regional vision is a development pattern that emphasizes a network of attractive, vibrant centers connected by transportation corridors that offer residents choices for getting from place to place, including public transit.

The Kansas City Region uses a “centers-and-corridors” land use and development strategy to grow **cost-effective**, affordable, walkable, mixed-use communities **close to jobs, retail, entertainment and transit.**

Setting a range of density targets by surrounding area characteristics – # of dwelling units/jobs per land area.

Edmonton, Wasatch Front (Salt Lake City), Saskatoon, Montreal, Greater Golden Horseshoe

Density targets for transit areas and non-transit areas in the Montreal region are accompanied by visualizations of real-life densities.



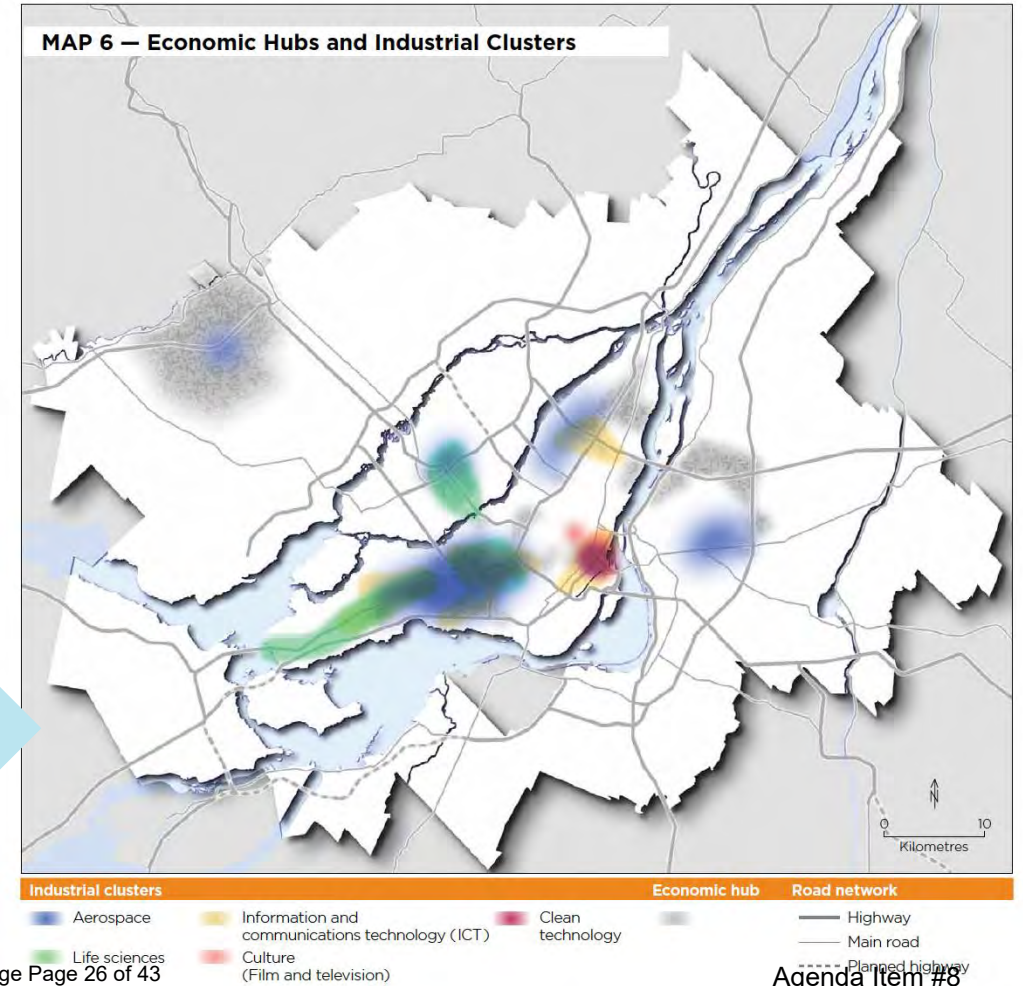
Protecting employment lands, supporting employment poles, nodes, and clusters.

Greater Golden Horseshoe, Montreal, Sydney, Sacramento, Vancouver, Victoria, Edmonton

Introducing *industrial land* protection/development policies.

Vancouver, Montreal, Edmonton

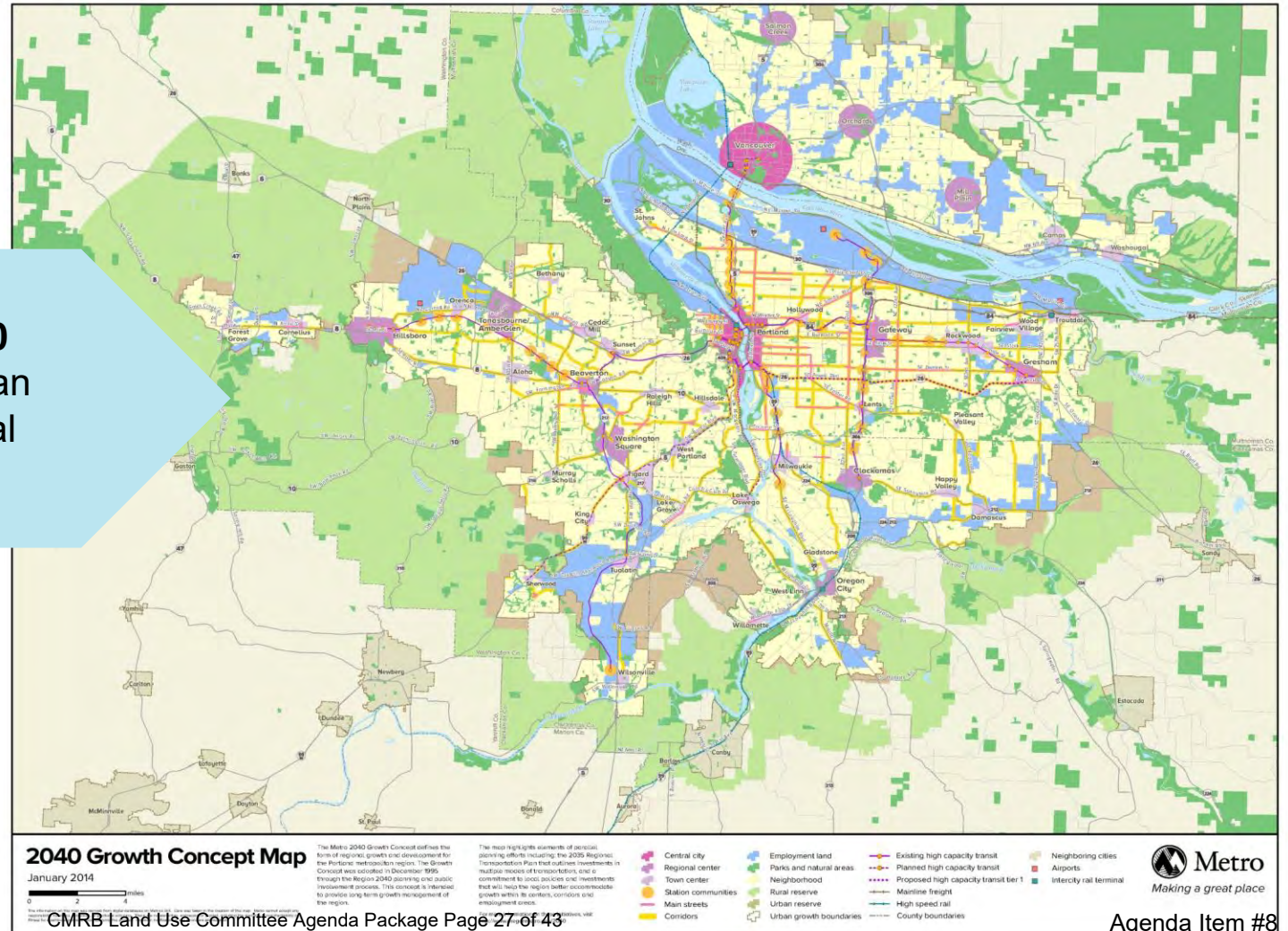
The Montreal regional plan identifies employment **hubs** and industrial **clusters** of local and regional significance for coordinating efficient access to **transportation corridors** and **labour pools**.



Aligning growth horizons and land supply

Portland, Denver, Saskatoon, San Francisco Bay Area, Vancouver, Victoria, Montreal

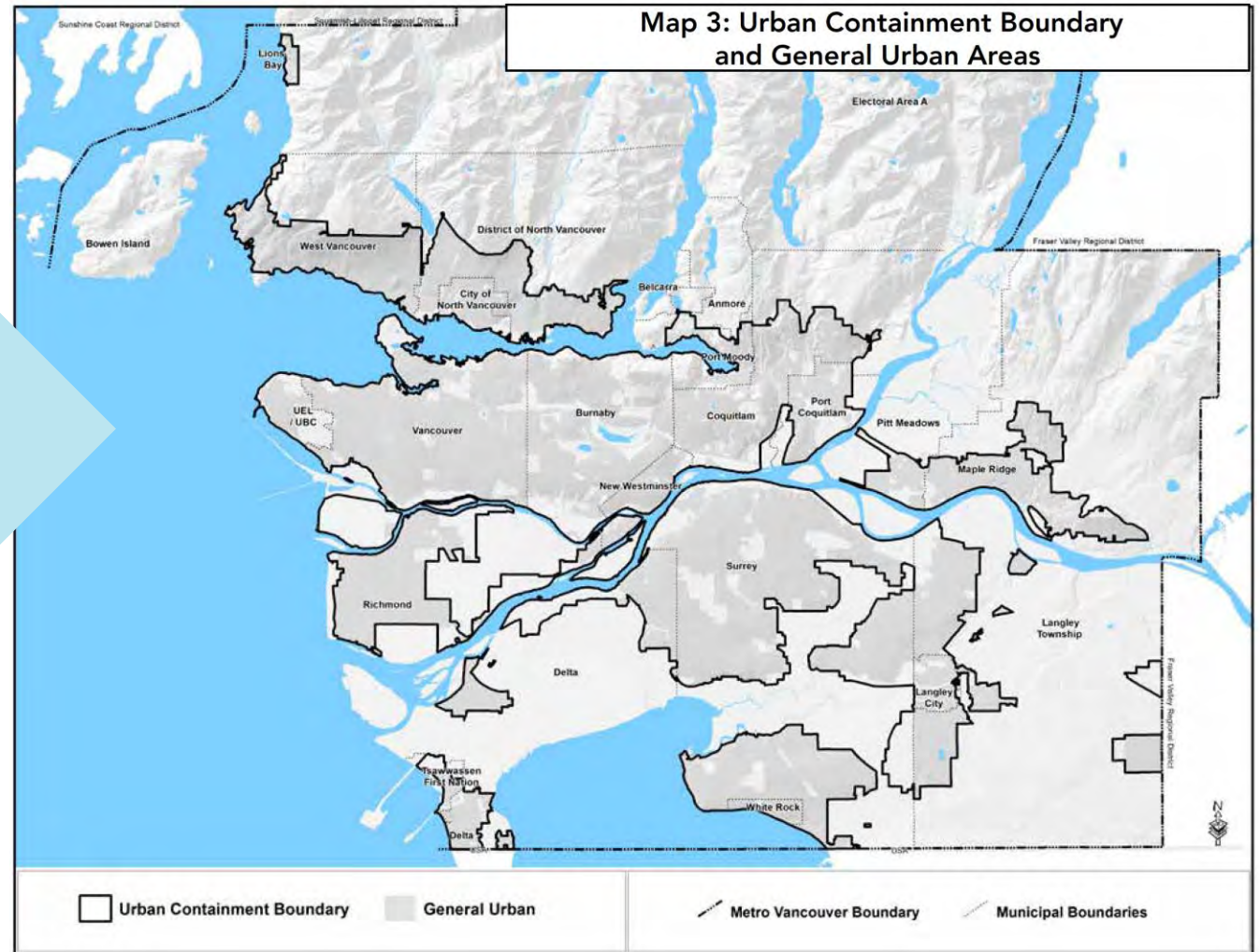
Metro Portland plans for **growth on a 20 and 50-year horizon** and identifies Urban Reserves for urban expansion and Rural Reserves.



Establishing an Urban Growth Boundary/Area

Portland, Denver, Saskatoon, San Francisco Bay Area, Vancouver, Victoria, Montreal

Vancouver's Urban Containment Boundary keeps development **compact** and **provides predictability** for locating urban uses, major regional transportation and infrastructure investment.



Selecting growth pattern by quality-of-life impacts

Wasatch Front (Salt Lake City), San Francisco Bay Area and Sacramento

The Wasatch Front (Salt Lake City) selects **location and intensity of growth** in the region based on impacts to measures like **travel time, per capita water consumption and walkability**.

The 1999 Quality Growth Strategy developed in part by John Fregonese and Peter Calthorpe has been superseded by the 2006 Wasatch Choice 2040 Plan by the Regional Council and is now a historical document.

Español  WASATCH FRONT REGIONAL COUNCIL

Wasatch Choice Interactive Map

Scenario Descriptions

Scenario	Existing Conditions	Emerging Pattern	Emerging Pattern	Emerging Pattern
Scenario 1
Scenario 2
Scenario 3
Scenario 4

Walkability

Scenario	Existing Conditions	Emerging Pattern	Emerging Pattern	Emerging Pattern
Scenario 1	8%	12%	28%	31%

Destination Access

Scenario	Existing Conditions	Emerging Pattern	Emerging Pattern	Emerging Pattern
Scenario 1	450K	290K	412K	457K
Scenario 2	91K	51K	63K	75K

Freight


Scenario	Existing Conditions	Emerging Pattern	Emerging Pattern	Emerging Pattern
Scenario 1	54min	20min	44min	51min

Auto Travel Time

Scenario	Existing Conditions	Emerging Pattern	Emerging Pattern	Emerging Pattern
Scenario 1

 WASATCH FRONT REGIONAL COUNCIL

Draft Wasatch Choice 2050 Vision



Legend

- Transit Line Projects
- Roadway Line Projects
- Centers
 - Area of Change
 - Boulevard Community
 - Industrial Area
 - Job Area
 - Main Street
 - Metropolitan Center
 - Special District
 - Station Community
 - Town Center
 - Urban Center
 - Village Center

Esri, HE

Integration: Integrating growth and infrastructure planning to maximize investment



Identifying and coordinating regional infrastructure priorities to obtain government funding

Bay Area, San Diego Sydney, Salt Lake City, Denver, Portland, Edmonton

MAP 1.3

Key Projects Delivered by Voter-Approved Regional Measures

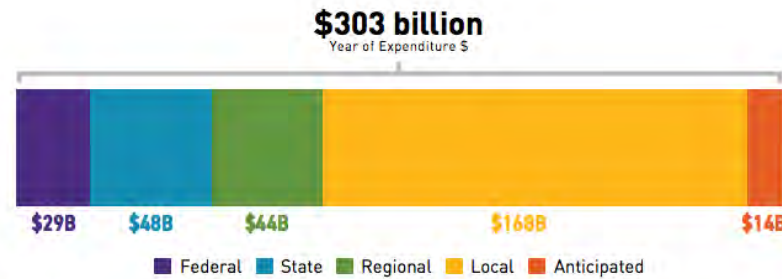


FIGURE 3.3 Forecasted transportation revenues for Plan Bay Area 2040.

Source: Metropolitan Transportation Commission, 2016

Mode	Cost* to Maintain Existing Asset Condition (\$ Billions)	Cost* to Achieve Ideal Asset Condition (\$ Billions)
Local Streets and Roads	\$ 43	\$ 49
State Highways**	20	20
Local Bridges**	2	2
Regional Bridges**	16	16
Transit Capital	29	47
Transit Operating***	120	120
Total	\$230	\$254

* In year-of-expenditure dollars.

** Costs associated with maintaining existing conditions are not available for highways and bridges, so the costs for ideal asset condition are listed in both categories.

*** Transit operating costs are only for maintaining existing conditions.

TABLE 3.3 Costs to operate and maintain the existing transportation system.

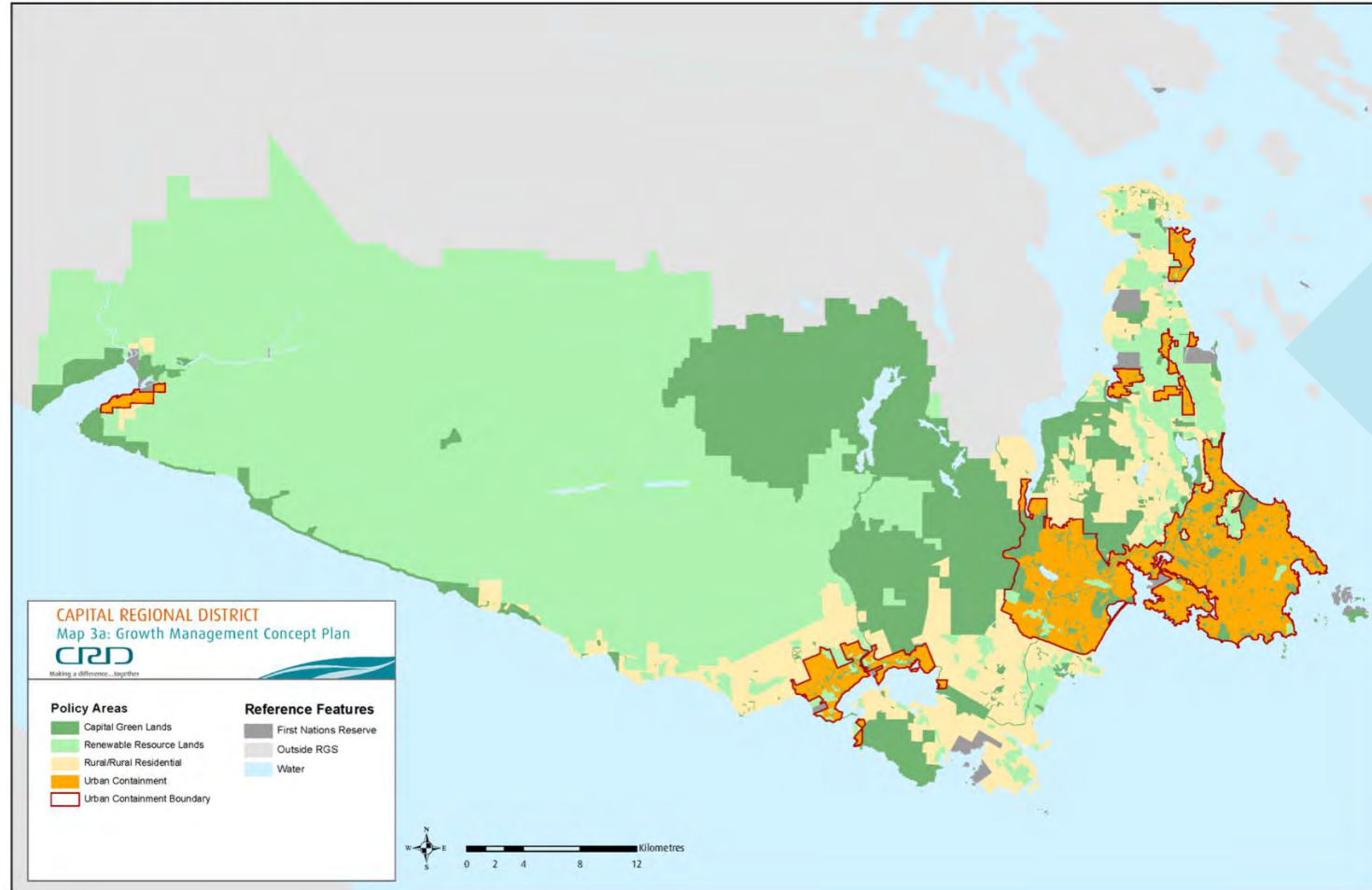
Source: Metropolitan Transportation Commission, 2016

Bay Area has delivered significant transportation improvements with federal funding by regional aligning priorities and prioritizing investments.

Policies for managing growing demand for infrastructure and servicing

Victoria, Sydney, Kansas City, Denver, Saskatoon, Vancouver

MAP 3(A): GROWTH MANAGEMENT CONCEPT PLAN



Victoria region provides **new water services** only to municipalities with **strong growth management** planning provisions and water demand growth strategies.



Resiliency:

Adaptation

Addressing climate resiliency, water resources management and risk/hazard identification and mitigation.

Sydney, Sacramento, Kansas City

The Sydney metropolitan region collaborates with the State government for its Metropolitan Water Plan and has policies for delivering **integrated** water, wastewater and stormwater solutions with continuous **water recycling** capabilities to **new communities**.

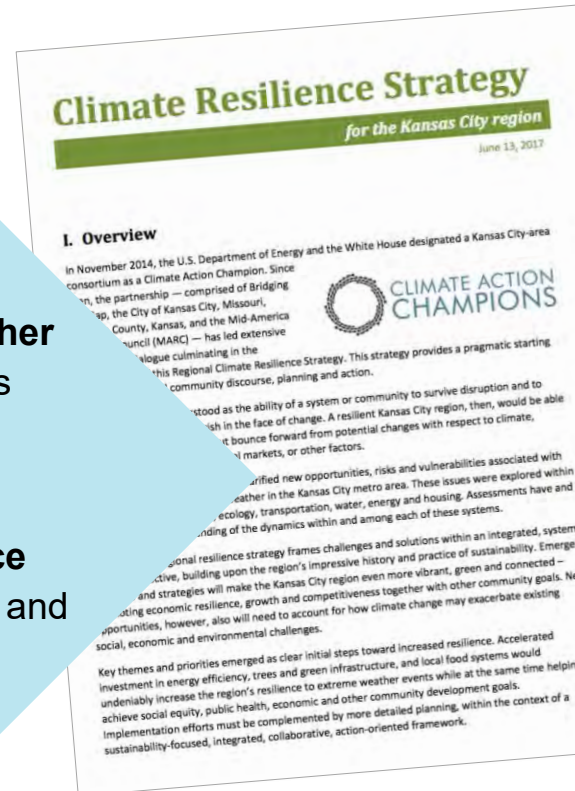


Addressing climate resiliency, water resources management and risk/hazard identification and mitigation.

Sydney, Sacramento, Kansas City

Kansas City Multi-Regional Multi-Hazard Mitigation Plan (2015) addresses **flooding, drought, tornadoes and other extreme events** and offers strategies for reducing losses from identified hazards.

Regional Climate Resilience Strategy (2017) provides alternative climate **mitigation, adaptation and resilience strategies** for transportation, energy, water, ecosystems and public health.



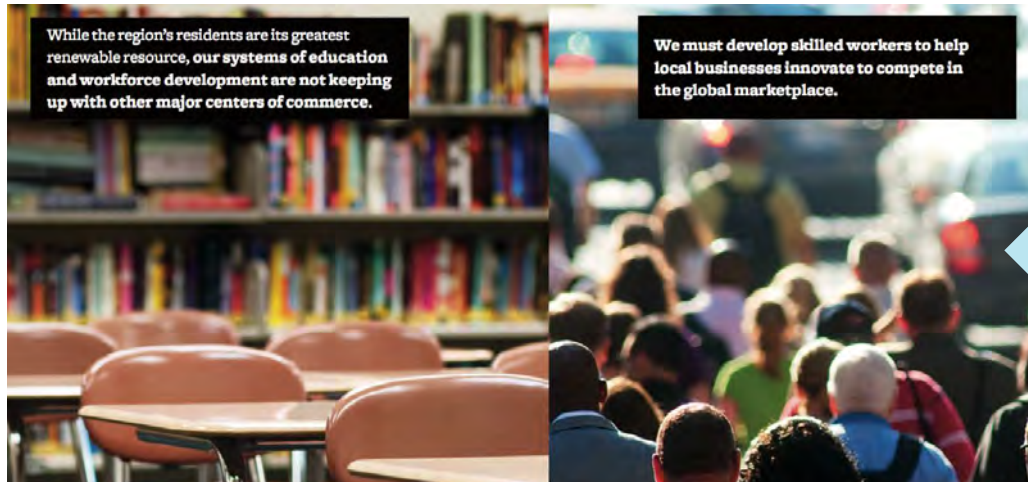
Competitiveness:

Global Economic Position and Talent Attraction

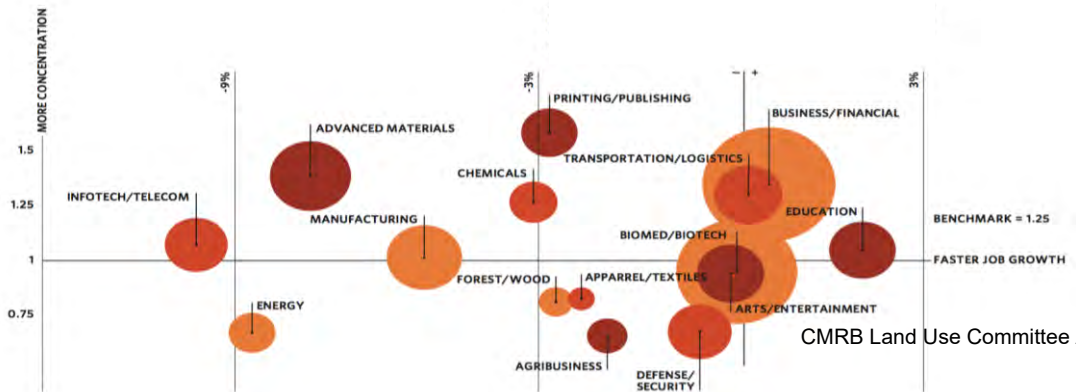


Strategies to foster economic competitiveness: labour force attraction and workforce development.

Chicago, Halifax, Montreal, San Diego



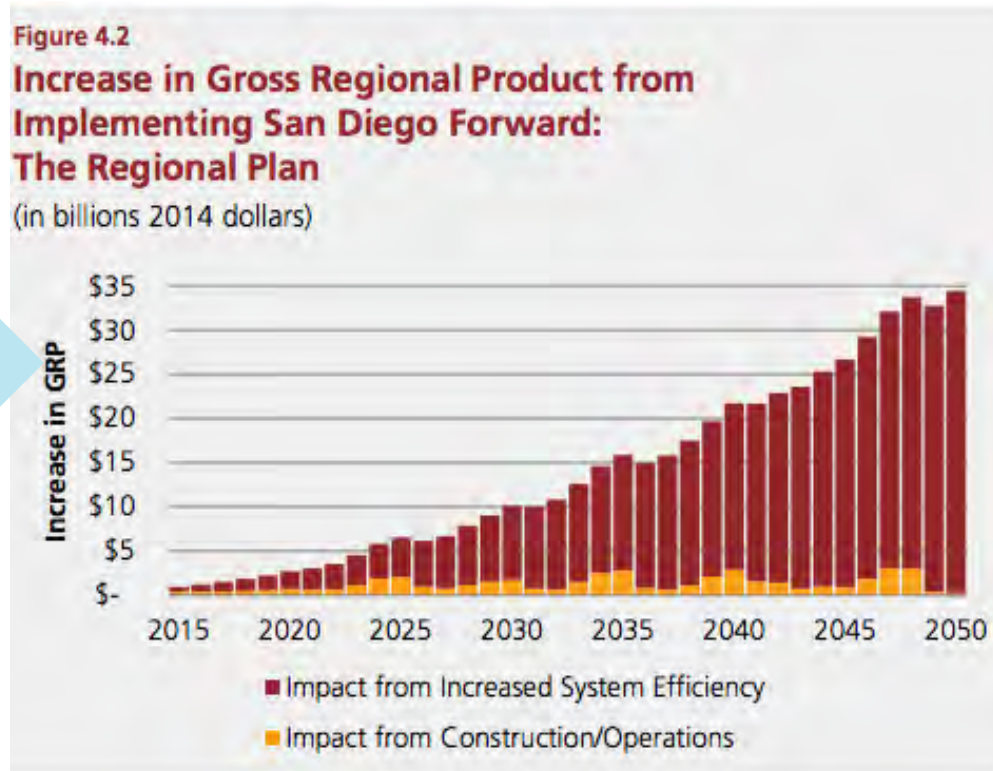
The Chicago regional plan focuses on **economic prosperity** and growth through regional specialization/economic **clusters**, and **workforce development**.



Strategies to foster economic competitiveness: Maximizing competitive advantages and regional assets

Chicago, Halifax, Montreal, San Diego

San Diego Plan included extensive economic impact and competitive analysis and identified significant economic benefits related to the Plan.



\$1 = \$2

Every dollar invested yields nearly \$2 in economic benefit.

The Regional Plan shows that its benefits outweigh its costs by a factor of nearly two-to-one, meaning that for every dollar invested in transportation, the region gets back almost two dollars in benefit.



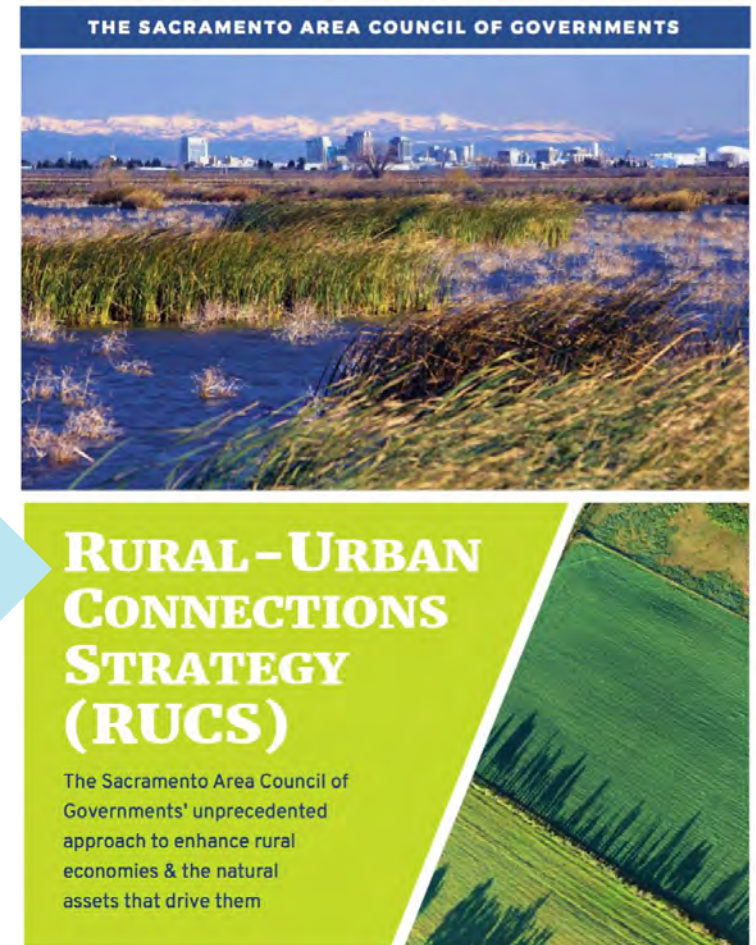
Planning for Regional Diversity:

Addressing urban and rural issues and a range of scales and contexts

Bringing a rural lens to growth and sustainability objectives and balancing urban-rural issues.

Sacramento, Edmonton

The Sacramento region (85% rural) **fought** the **oversimplification of rural communities** in regional planning by analyzing in depth how infrastructure, land use and market factors affect the **viability of rural livelihoods**.



A framework of policy tiers responding to variations in context.

Sacramento, Edmonton

The Edmonton Metropolitan Region Growth Plan incorporates three policy tiers with distinct policy for each policy tier, to address a range of contexts.

Policy Tiers

RURAL AREA



METROPOLITAN AREA



METROPOLITAN CORE



Regional Planning Best Practices | Key Findings

- **Alignment:** Many metropolitan regions have successfully utilized regional plans to **manage rapid growth** and **align growth with infrastructure** planning and expenditures.
- **Benefits:** Regional planning helps achieve infrastructure and servicing **cost efficiencies** (capital and operating), **enhanced levels of service** and greater political clout in **attracting investment**.
- **Diversity:** Regional plans emphasize the value and contribution of **diverse municipal members** to the regional whole, foster **regional thinking** and introduce tools for addressing **inter-municipal concerns**.
- **Resiliency:** Plans identify **risks and hazards** to the region and provide policies for **resource re-use, conservation** and **loss reduction** in extreme events.
- **Water:** In water scarce communities, regional planning has assisted **water conservation** and **sustainable supply** efforts.
- **Regional Structure and Targets:** Regions deploy a range of **tools to structure growth**, including targets as key vehicles for **focusing plan intent** and achieving **measurable success**.

Discussion